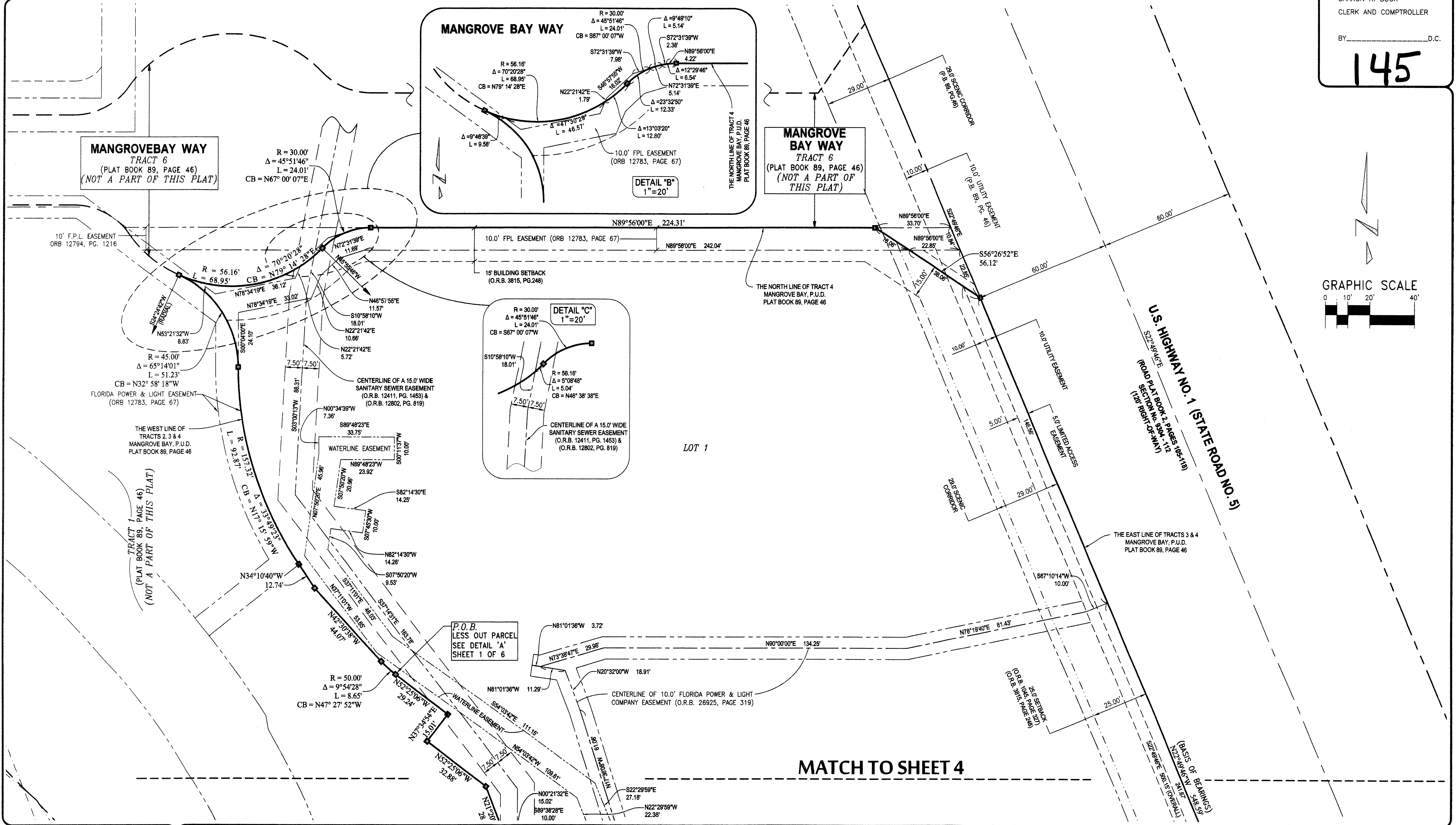
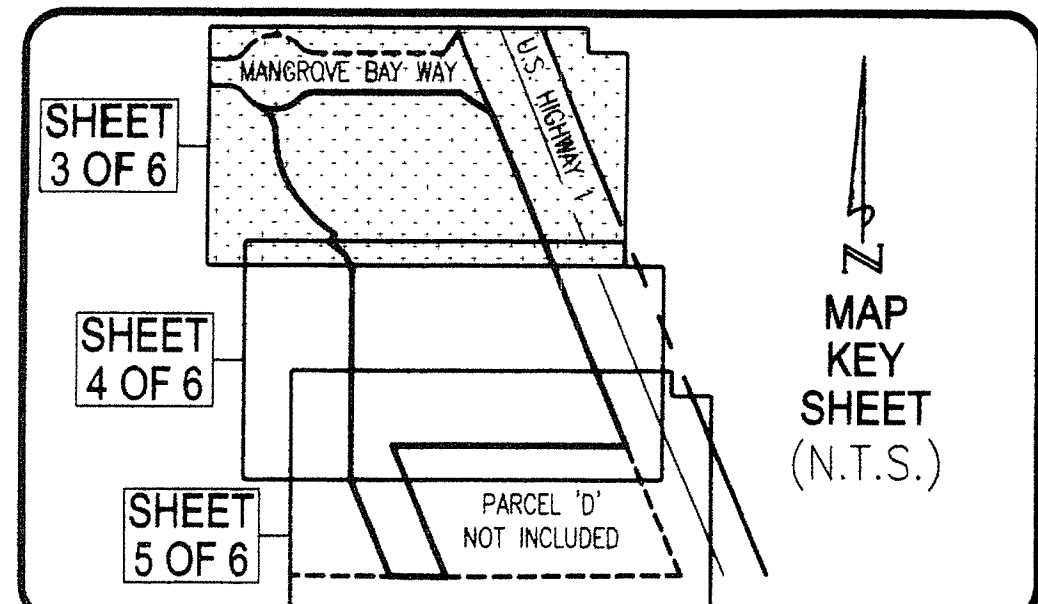
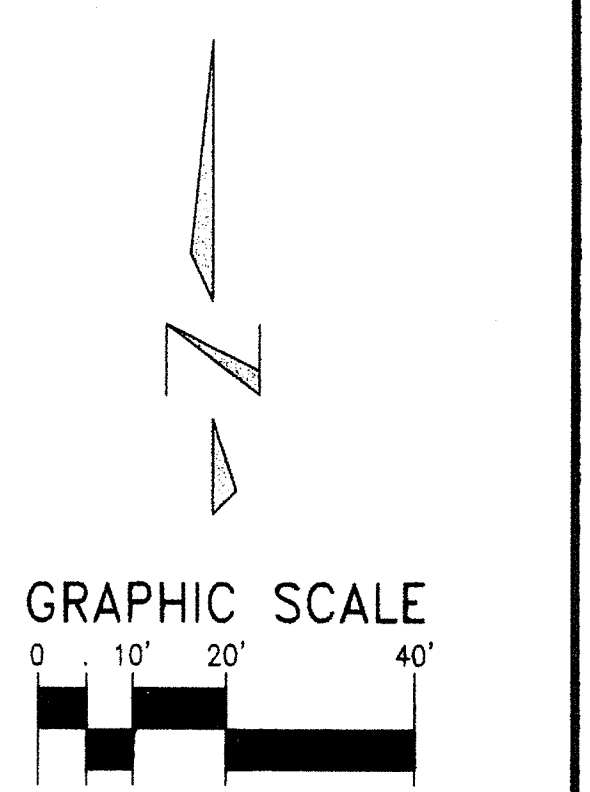


# RIVERWALK POINTE AT MANGROVE BAY

A REPLAT OF TRACTS 2, 3 AND A PORTION OF TRACT 4, MANGROVE BAY, P.U.D.,  
 A PLANNED UNIT DEVELOPMENT, AS RECORDED IN PLAT BOOK 89, PAGES 46,  
 PUBLIC RECORDS OF PALM BEACH COUNTY, FLORIDA,  
 LYING IN SECTION 8, TOWNSHIP 41 SOUTH, RANGE 43 EAST,  
 TOWN OF JUPITER, PALM BEACH COUNTY, FLORIDA  
 SHEET 3 OF 6 SEPTEMBER 2014

STATE OF FLORIDA  
 COUNTY OF PALM BEACH  
 THIS PLAT WAS FILED  
 FOR RECORD AT \_\_\_\_\_ M.  
 THIS DAY OF \_\_\_\_\_, 2014  
 AND DULY RECORDED IN PLAT  
 NO. \_\_\_\_\_ ON PAGES \_\_\_\_\_  
 THRU \_\_\_\_\_  
 SHARON R. BOCK  
 CLERK AND COMPTROLLER  
 BY \_\_\_\_\_ D.C.

145



**LEGEND OF SYMBOLS:**

- = 4"x4" CONCRETE MONUMENT STAMPED "P.R.M. LB4897" OR AS NOTED.
- △ = MAG NAIL & DISK STAMPED "P.R.M. LB 4897" OR AS NOTED.

**PROPERTY CONTROL ABBREVIATIONS:**

- P.C.P. = PERMANENT CONTROL POINT
- P.R.M. = PERMANENT REFERENCE MONUMENT
- CONC. = CONCRETE
- MON. = MONUMENT
- M.N.D. = MAG NAIL & DISK

**LEGEND OF ABBREVIATIONS:**

**ARITHMETIC / ANNOTATION ABBREVIATIONS:**

- D = DEGREES
- M = MINUTES
- S = SECONDS
- R = RADIUS
- Δ = DELTA
- L = ARC LENGTH
- CB = CHORD BEARING
- P.C. = POINT OF CURVATURE
- P.T. = POINT OF TANGENCY
- P.R.C. = POINT OF REVERSE CURVE
- RAD. = RADIAL
- N.R. = NON-RADIAL
- T = TANGENT
- N.T. = NON-TANGENT
- C/L = CENTERLINE
- P.B. = PLAT BOOK
- D.B. = DEED BOOK
- O.R.B. = OFFICIAL RECORD BOOK
- P.G. = PAGE
- P.O.C. = POINT OF COMMENCEMENT
- P.O.B. = POINT OF BEGINNING
- P.O.T. = POINT OF TERMINUS
- L.B. = LICENSED BUSINESS
- P.S.M. = PROFESSIONAL SURVEYOR & MAPPER

**EASEMENT / MISCELLANEOUS ABBREVIATIONS:**

- L.A.E. = LIMITED ACCESS EASEMENT
- L.B.E. = LANDSCAPE BUFFER EASEMENT
- L.M.E. = LAKE MAINTENANCE EASEMENT
- S.L.E. = SANITARY SEWER LINE EASEMENT
- W.L.E. = WATER LINE EASEMENT
- D.E. = DRAINAGE EASEMENT
- U.E. = UTILITY EASEMENT
- N.T.S. = NOT TO SCALE
- O.A. = OVERALL

**KESHAVARZ ASSOCIATES**  
 Civil Engineers • Land Surveyors  
 711 North Dixie Highway, Suite 201  
 West Palm Beach, Florida 33401  
 Tel: (561) 689-8900 Fax: (561) 689-2126

THIS INSTRUMENT WAS PREPARED BY SCOTT F. BRYSON, IN AND FOR THE OFFICES OF KESHAVARZ & ASSOCIATES, INC., LB4897, 711 NORTH DIXIE HIGHWAY, SUITE 201, WEST PALM BEACH, FLORIDA 33401 TELEPHONE (561) 689-8900.

DATE: 1/02/13	CHECKED: SFB	PROJECT No.	SHEET No.
SCALE: 1" = 20'	APPROVED: SFB	11-984	3 OF 6
DRAWN: RAB	DWG No: D11-984		

Z:\2011\11-984 Mangrove Bay Tracts 2,3 And 4\dwg\11-984 Mangrove Bay Tracts 2,3 And 4 Replat.dwg Wednesday, August 06, 2014 1:17:16 PM